

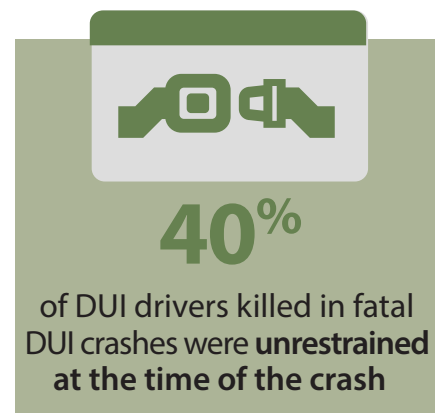
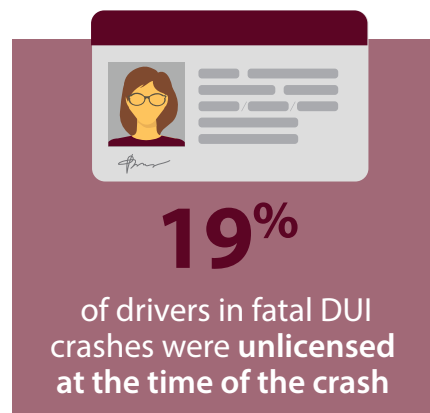
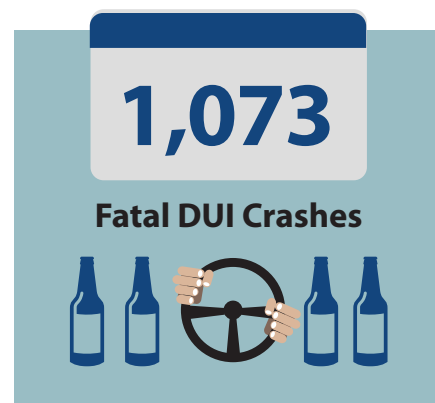
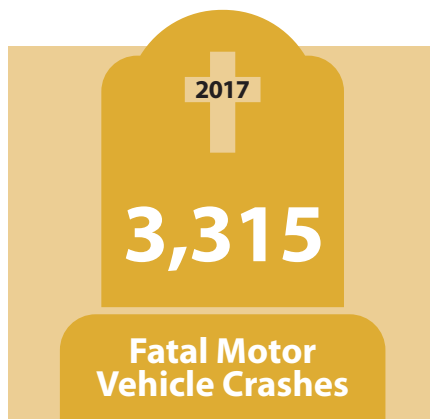
# A PRELIMINARY LOOK: 2017 DUI Crashes



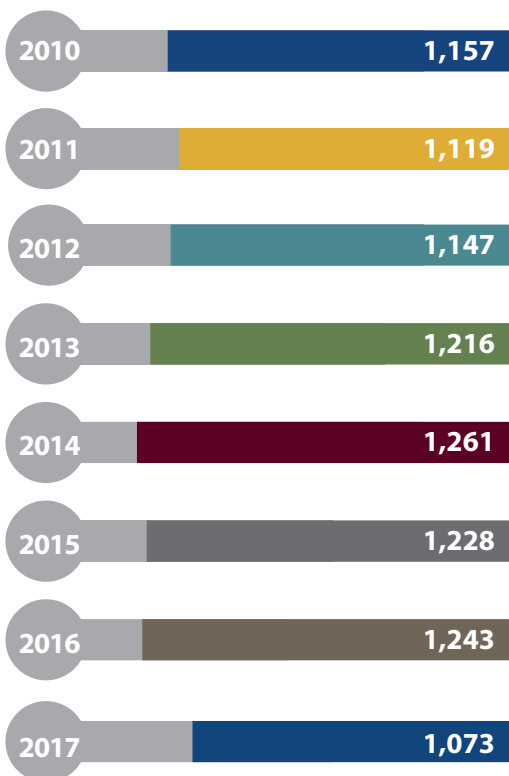
## WHAT IS DRIVING UNDER THE INFLUENCE (DUI) CRASH?

A **DUI crash** is a crash where the driver has a blood alcohol concentration (BAC) result of greater than 0.00, or had a **positive alcohol test**, or had a **positive drug test**, or had a contributing factor of **had been drinking**, or **under the influence – alcohol**, or **under the influence – drugs**, or **taking medication** flagged on a crash report.

## FATAL CRASHES



## FATAL DUI CRASHES



## BLOOD ALCOHOL CONCENTRATION

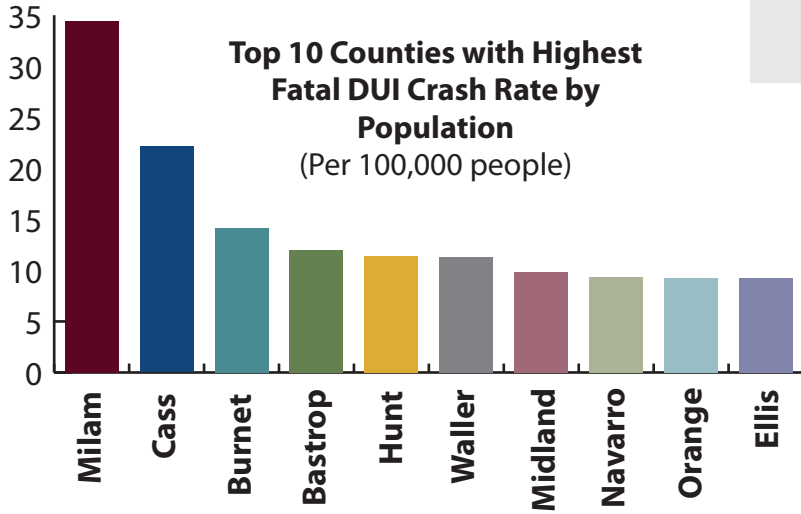
**0.157**  
Average BAC of a driver in a **fatal DUI crash**



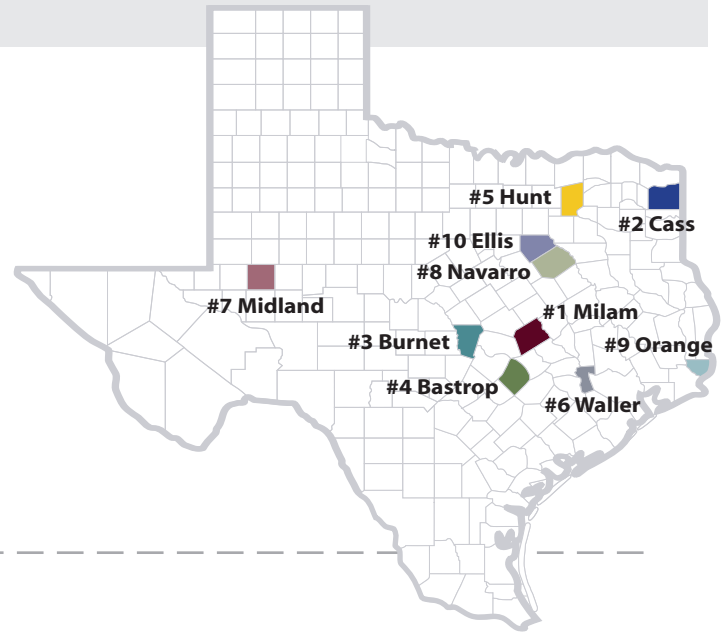
**0.166**  
Average BAC of a driver in a **DUI crash** (across all injury severities)



## FATAL DUI CRASH RATES\*

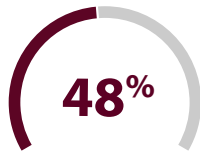


The average **fatal DUI crash rate** is **3.695 per 100,000 people** in Texas. That means, for every 100,000 people in Texas, there are on average 3.695 fatal DUI crashes.



\* Only counties with 5 or more fatal DUI crashes were included in the analysis

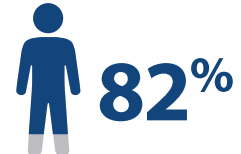
## DUI DRIVER STATISTICS



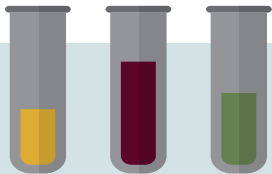
of drivers in fatal DUI crashes are **Caucasian**



is the **average age** of drivers in fatal DUI crashes



of drivers in fatal DUI crashes are **male**



**24%**

of **drivers in fatal DUI crashes** with a BAC greater than 0.00 had a **positive substance test**



For drivers who had a **positive substance test**, the most common substance other than alcohol was **multiple drugs** (34%), followed by **cannabis** (32%), and **CNS stimulants** (22%)



More fatal DUI crashes occurred on **Sunday** than any other day of the week



More fatal DUI crashes occurred between **2:00 – 2:59 AM** than any other hour of the week



of fatal DUI crashes are **single-motor vehicle crashes**, meaning the only vehicle involved in the crash was the DUI vehicle

The referenced data originates from the Texas Department of Transportation's Crash Records Information System as of 1/17/2018.

TTI.TxDOT1808.5144.0118

