

2016 DUI FACTS — Harris County



WHAT IS DRIVING UNDER THE INFLUENCE (DUI) CRASH?

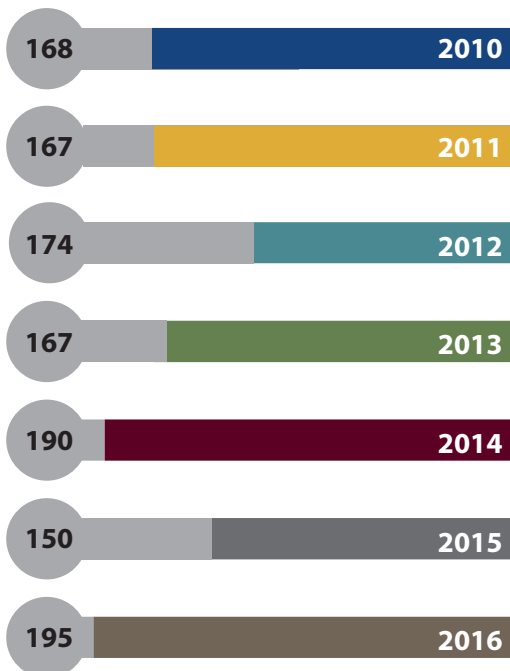
A crash where the driver has a blood alcohol concentration (BAC) result of > 0.00, or had a positive alcohol test, or had a positive drug test, or had a contributing factor of *had been drinking, or under the influence of alcohol, or under the influence – drugs, or taking medication.*

HARRIS COUNTY IS RANKED

#1 IN TEXAS FOR FATAL DUI CRASHES

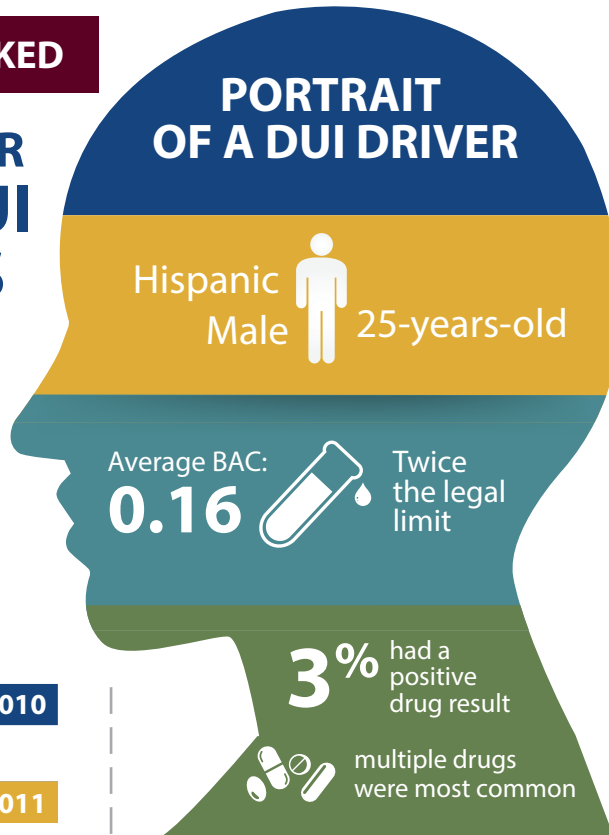
FOR THE 7TH YEAR IN A ROW

FATAL DUI CRASHES



More fatal DUI crashes occurred in 2016 in Harris County than in the past 6 years.

PORTRAIT OF A DUI DRIVER



DUI FATALITIES



DUI CRASHES AND OTHER ROAD USERS

In 2016, there were 47 DUI crashes that involved vehicles colliding with pedestrians, 5 that involved pedalcyclists, and 70 that involved vehicles colliding with motorcyclists.

